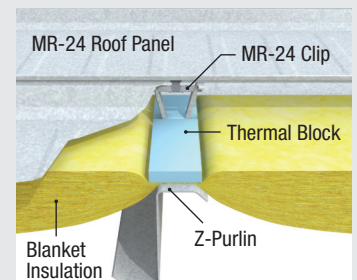




Building Features

- ▶ Building dimensions are 200' wide x 250' long x 24' tall
- ▶ 50,000 sq ft virtual building is well suited for most any industrial or manufacturing use
- ▶ All architectural and engineering fees & state building plan approval included
- ▶ Architectural enhancements suitable for typical protective covenant requirements
- ▶ Structure designed for 10-ton overhead cranes and easy expansion
- ▶ Durable and attractive prefinished Butler Shadowwall wall panel and the time tested Butler MR-24® standing seam roof
- ▶ (2) 14'x14' overhead doors, (4) loading docks, aluminum windows and entry doors, and daylighting in production area
- ▶ 6" thick reinforced concrete slab, 8' tall interior metal liner panel, and (2) crane runways
- ▶ 1200 amp, three phase electrical service, LED lighting, and exterior illumination
- ▶ Utility allowance
- ▶ Build to suit office area
- ▶ Approximate 10 month construction timeline from permit approval

All Butler Buildings contain up to 74% recycled steel and are designed to be easily disassembled and recycled.

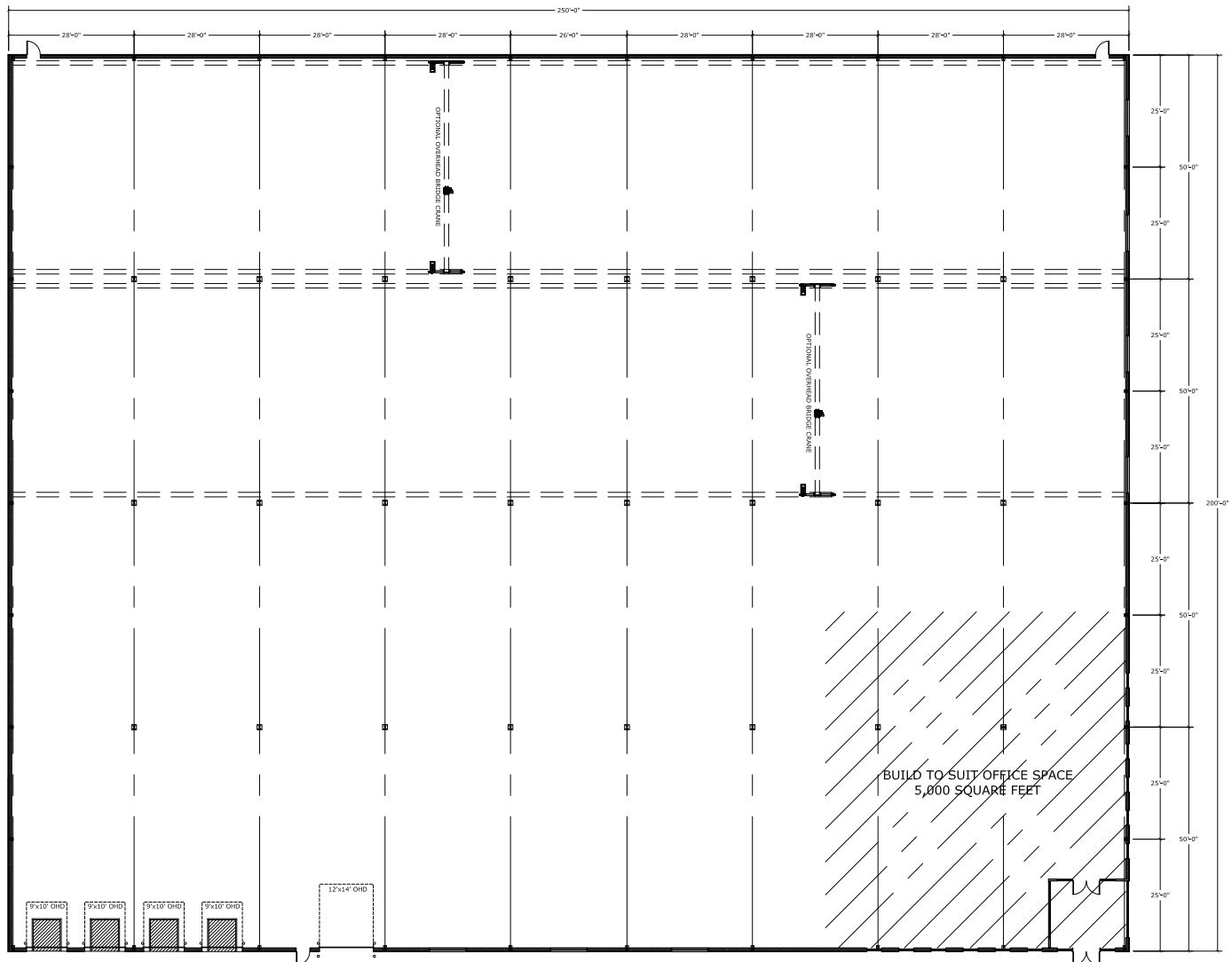


MR-24® ROOF SYSTEM



LEARN MORE HERE!

FLOOR PLAN

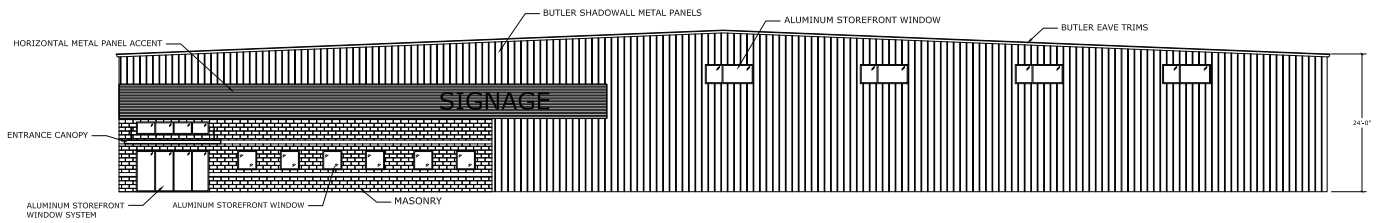


**Pre-Engineered
Metal Building Solutions**

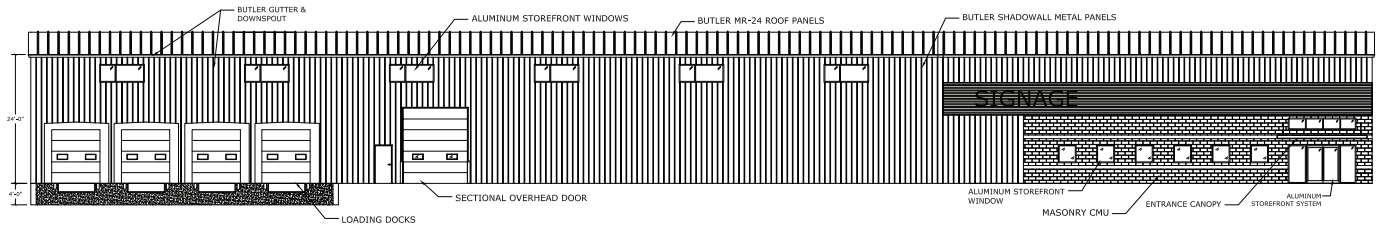
BUILDING FEATURES

- ▶ **BUILDING USE:** well suited for most any industrial or manufacturing use
- ▶ **SIZE:** 50,000 sq ft; 200' wide x 250' long x 24' tall
- ▶ (2) 14'x14' overhead doors, (4) loading docks, aluminum windows and entry doors, and daylighting in production area
- ▶ All fees & state building plan approval for commercial uses
- ▶ Architectural enhancements suitable for typical protective covenant requirements
- ▶ Structure designed for 10-ton overhead cranes and easy expansion
- ▶ Butler Shadowwall wall panels and MR-24® standing seam roof
- ▶ 6" thick reinforced concrete slab; 8' tall interior metal liner panel; (2) crane runways
- ▶ 1200 amp, three phase electrical service, LED lighting, and exterior illumination
- ▶ (2) private offices, kitchenette, and unisex bathroom
- ▶ Utility allowance; Build to suit office area
- ▶ Approximate 10 month construction timeline

EAST ELEVATION



SOUTH ELEVATION



Pre-Engineered
Metal Building Solutions

BUILDING FEATURES

- ▶ **BUILDING USE:** well suited for most any industrial or manufacturing use
- ▶ **SIZE:** 50,000 sq ft; 200' wide x 250' long x 24' tall
- ▶ (2) 14'x14' overhead doors, (4) loading docks, aluminum windows and entry doors, and daylighting in production area
- ▶ All fees & state building plan approval for commercial uses
- ▶ Architectural enhancements suitable for typical protective covenant requirements
- ▶ Structure designed for 10-ton overhead cranes and easy expansion
- ▶ Butler Shadowwall wall panels and MR-24® standing seam roof
- ▶ 6" thick reinforced concrete slab; 8' tall interior metal liner panel; (2) crane runways
- ▶ 1200 amp, three phase electrical service, LED lighting, and exterior illumination
- ▶ (2) private offices, kitchenette, and unisex bathroom
- ▶ Utility allowance; Build to suit office area
- ▶ Approximate 10 month construction timeline



Proud Butler Career Builder

A.C.E. Building Service has been a Butler Builder since 1973, and we have been a designated Career Builder since 1975.

Only Butler Builders who have demonstrated total competence in design and construction are eligible for this highest level of affiliation with the Buildings Division. The Career Builder designation is a significant achievement and means that our team meets the highest standards of performance in these seven key areas:

- ▶ Marketing Competence
- ▶ Construction Capability
- ▶ Professional Design Services
- ▶ Sound Business Management
- ▶ Adequate Financial Resources
- ▶ High Local Reputation
- ▶ Career Dedication



As a Career Builder, A.C.E. Building Service, Inc., shares an added responsibility with Butler Manufacturing Company to jointly offer the best in construction products and services to our mutual customers.



Interested In Learning How A Butler Building Can Work For You?

We would be happy to listen to your ideas and show you how the Butler Building System can work for your project. **Let's get started.**

Chris Herzog, LEED-AP
President
cherzog@acebuildingservice.com
Phone: 920.901.0667
acebuildingservice.com



3510 S. 26th Street
Manitowoc, Wisconsin 54221-1626
Phone: 920.682.6105