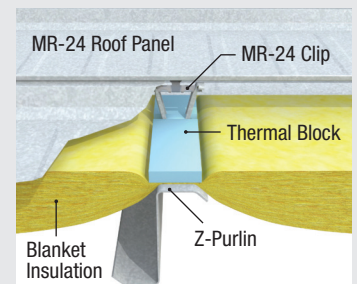




Building Features

- ▶ Building dimensions are 40' wide x 80' long x 15' tall
- ▶ 3,200 sq ft virtual building is perfect for startup businesses, automotive repair, agricultural and shop applications
- ▶ All architectural and engineering fees & state building plan approval for commercial applications
- ▶ Structure designed for easy expansion in three directions
- ▶ Durable and attractive prefinished Butler Shadowwall wall panel and the time tested Butler MR-24® standing seam roof
- ▶ (3) 12'x12' overhead doors, hollow metal windows and entry doors
- ▶ 6" thick reinforced concrete slab, 8' tall interior metal liner panel, and insulated to commercial building code standards
- ▶ 200 amp, three phase electrical service, LED lighting, and exterior illumination
- ▶ Utility allowance
- ▶ Private office and unisex bathroom
- ▶ Approximate 3 month construction timeline from permit to approval

All Butler Buildings contain up to 74% recycled steel and are designed to be easily disassembled and recycled.

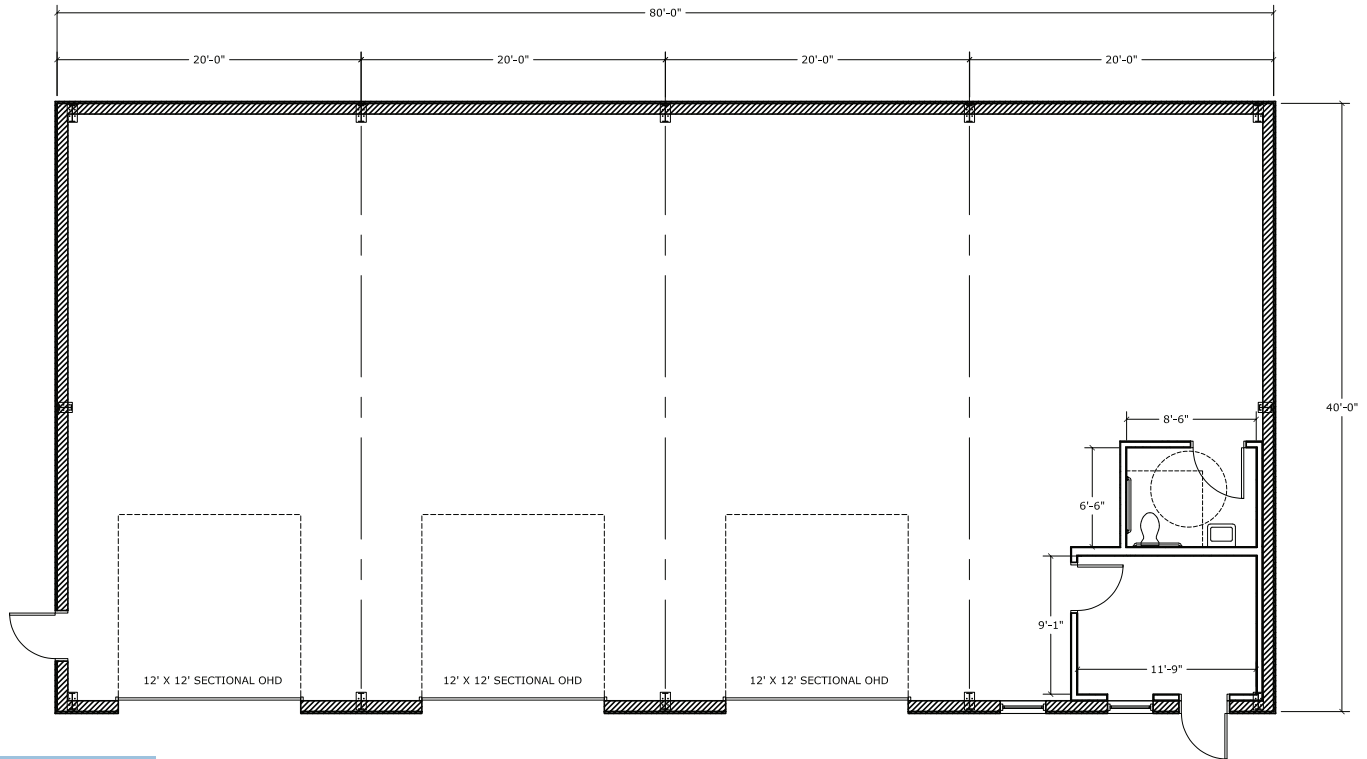


MR-24® ROOF SYSTEM

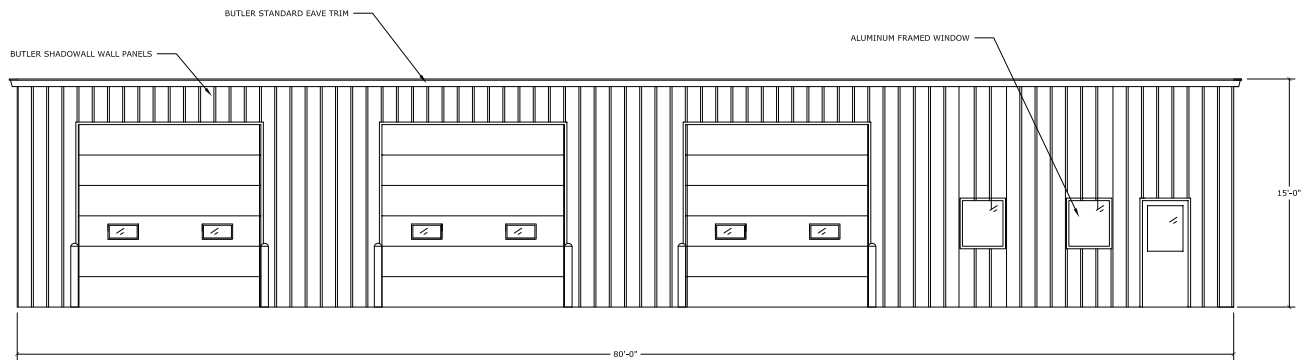


LEARN MORE HERE!

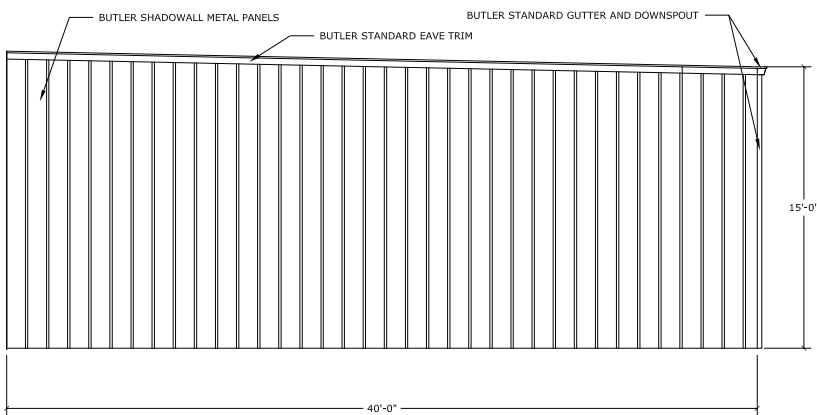
FLOOR PLAN



SOUTH ELEVATION



EAST ELEVATION



BUILDING FEATURES

- ▶ **BUILDING USE:** automotive repair, agricultural and shop applications
- ▶ **SIZE:** 3,200 sq ft; 40' wide x 80' long x 15' tall
- ▶ (3) 12'x12' overhead doors; Hollow metal windows and entry doors
- ▶ All fees & state building plan approval for commercial uses
- ▶ Structure designed for easy expansion in three directions
- ▶ Butler Shadowwall wall panels and MR-24® standing seam roof
- ▶ 6" thick reinforced concrete slab, 8' tall interior metal liner panel, and insulated to commercial building code standards
- ▶ 200 amp, three phase electrical service, LED lighting, and exterior illumination; Utility allowance
- ▶ Private office and unisex bathroom
- ▶ Approximate 3 month construction timeline



**Pre-Engineered
Metal Building Solutions**



Proud Butler Career Builder

A.C.E. Building Service has been a Butler Builder since 1973, and we have been a designated Career Builder since 1975.

Only Butler Builders who have demonstrated total competence in design and construction are eligible for this highest level of affiliation with the Buildings Division. The Career Builder designation is a significant achievement and means that our team meets the highest standards of performance in these seven key areas:

- ▶ Marketing Competence
- ▶ Construction Capability
- ▶ Professional Design Services
- ▶ Sound Business Management
- ▶ Adequate Financial Resources
- ▶ High Local Reputation
- ▶ Career Dedication



As a Career Builder, A.C.E. Building Service, Inc., shares an added responsibility with Butler Manufacturing Company to jointly offer the best in construction products and services to our mutual customers.



Interested In Learning How A Butler Building Can Work For You?

We would be happy to listen to your ideas and show you how the Butler Building System can work for your project. **Let's get started.**

Chris Herzog, LEED-AP
President
cherzog@acebuildingservice.com
Phone: 920.901.0667
acebuildingservice.com



3510 S. 26th Street
Manitowoc, Wisconsin 54221-1626
Phone: 920.682.6105