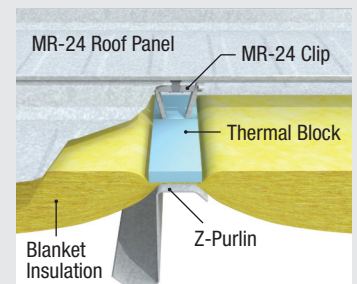




Building Features

- ▶ Building dimensions are 80' wide x 150' long x 24' tall
- ▶ 12,000 sq ft virtual building is perfect for growing businesses looking to expand and well suited for moderate manufacturing, machining, fabrication, and assembly uses
- ▶ All architectural and engineering fees & state building plan approval for commercial applications
- ▶ Structure will accommodate a 10-ton overhead bridge crane and is designed for easy expansion
- ▶ Durable and attractive prefinished Butler Shadowwall wall panel and the time tested Butler MR-24® standing seam roof
- ▶ (1) 12'x14' overhead door, (1) loading dock, aluminum windows and entry doors, daylighting in production area
- ▶ 6" thick reinforced concrete slab, 8' tall interior metal liner panel, clear span building frames
- ▶ 600 amp, three phase electrical service, LED lighting, and exterior illumination
- ▶ (4) private offices, conference room, break room, and bathrooms
- ▶ Approximate 6 month construction timeline from permit to approval

All Butler Buildings contain up to 74% recycled steel and are designed to be easily disassembled and recycled.

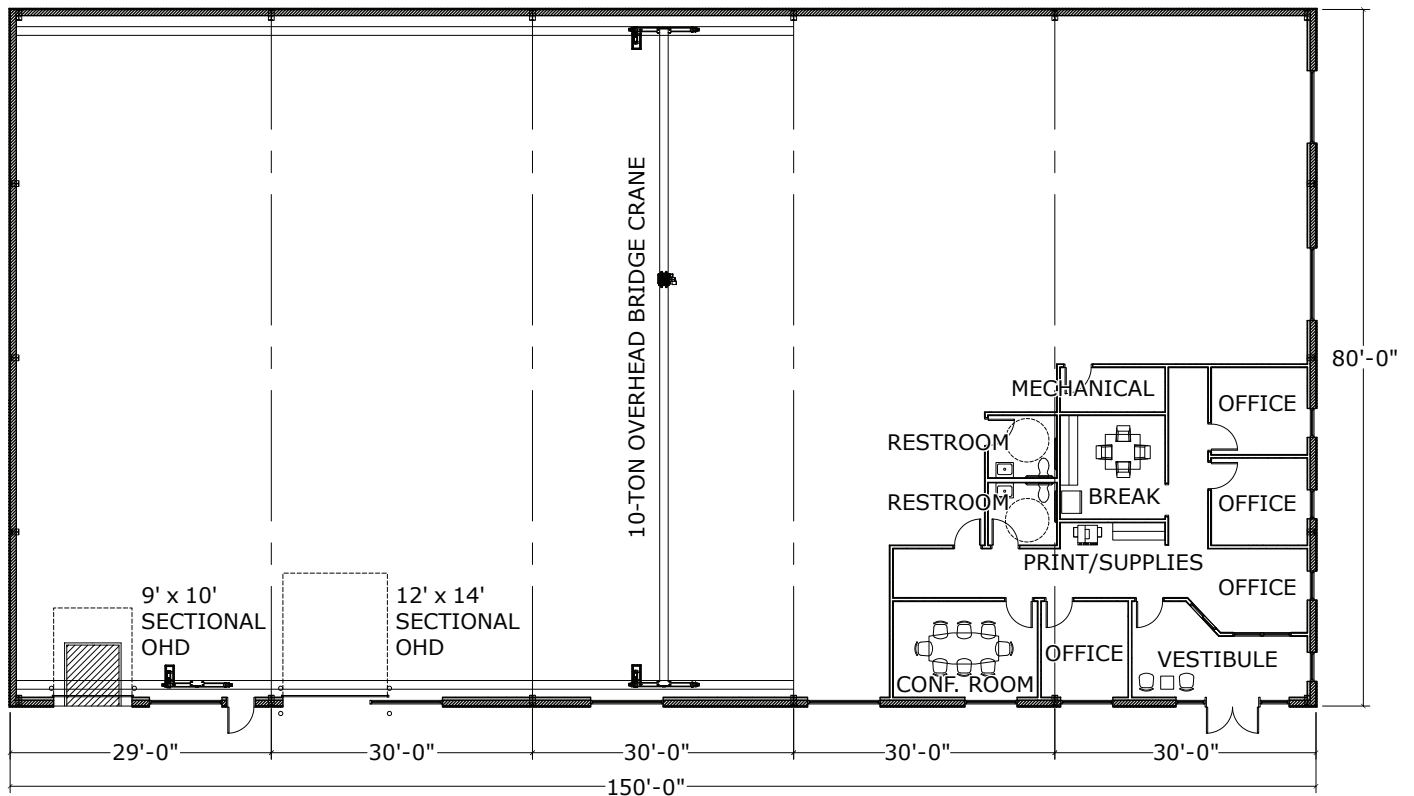


MR-24® ROOF SYSTEM

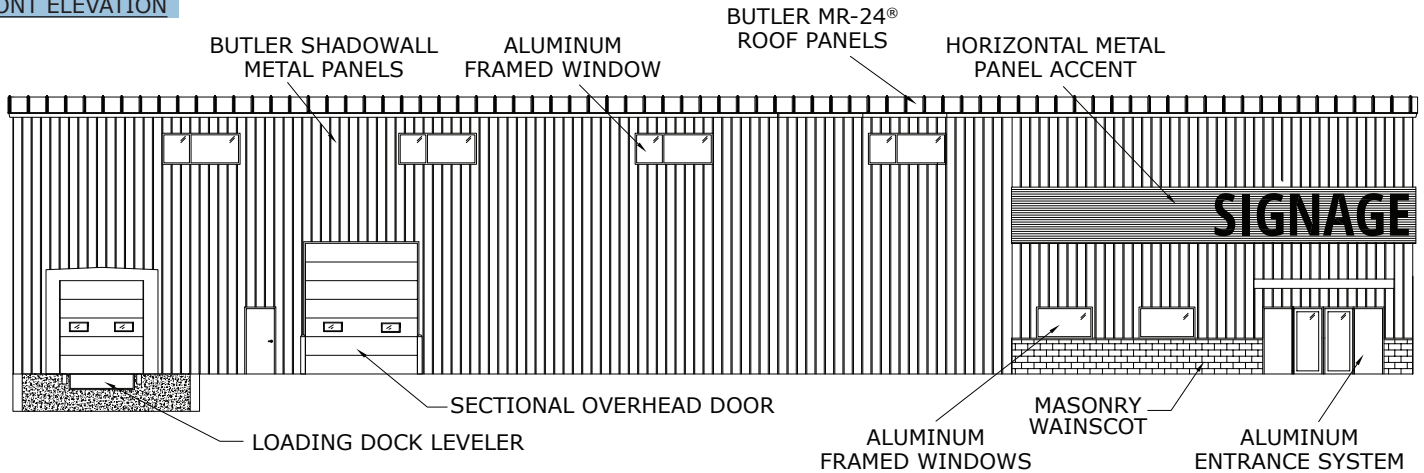


LEARN MORE HERE!

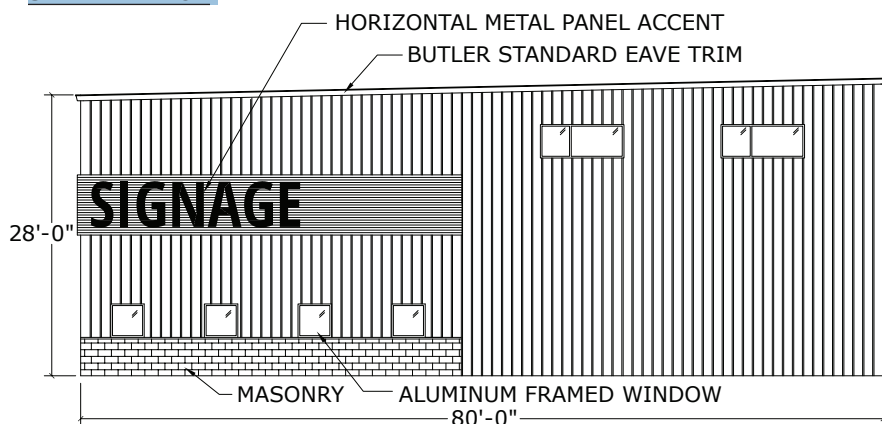
FLOOR PLAN



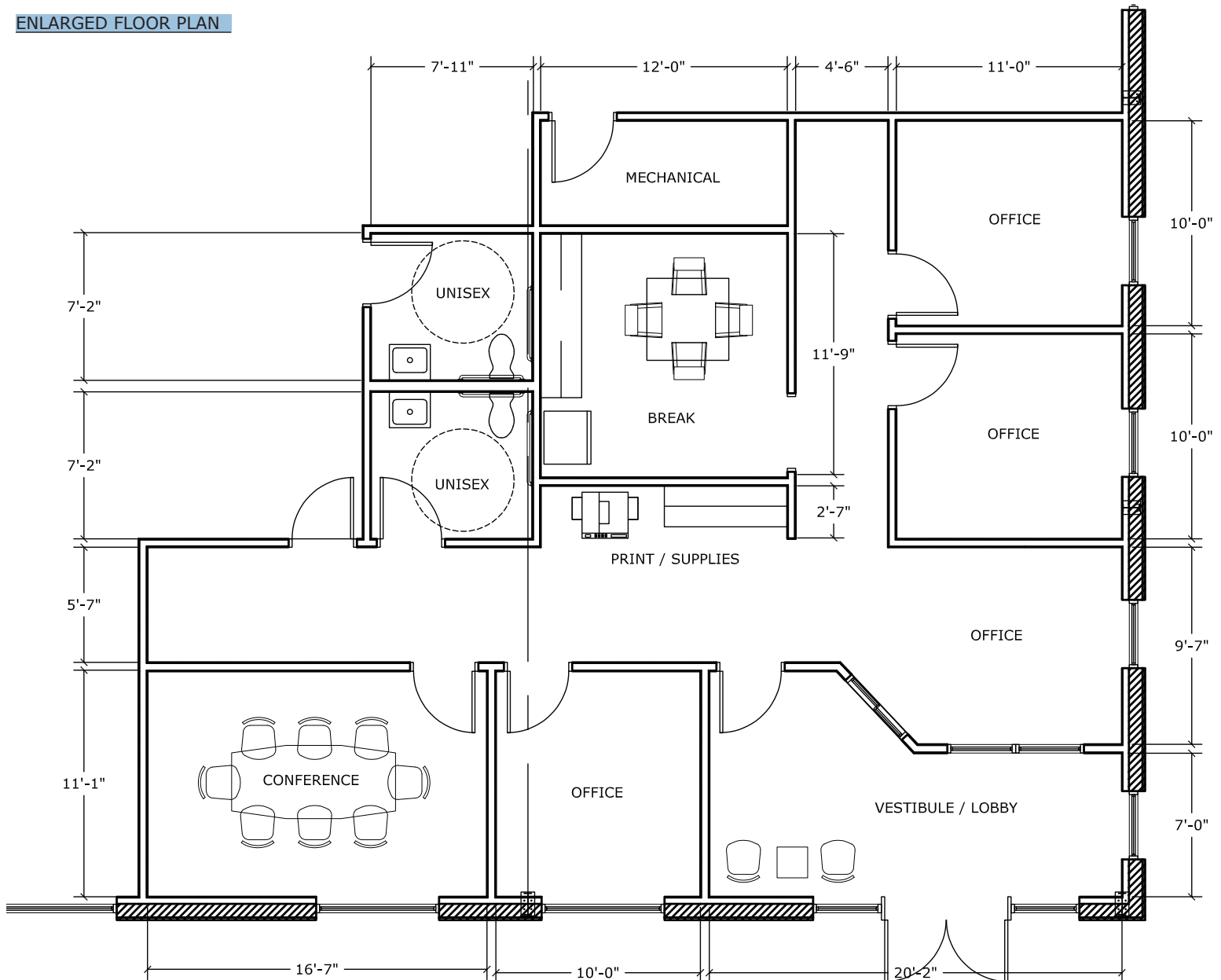
FRONT ELEVATION



SIDE ELEVATION



ENLARGED FLOOR PLAN



**Pre-Engineered
Metal Building Solutions**

BUILDING FEATURES

- ▶ **BUILDING USE:** perfect for growing businesses looking to expand and well suited for moderate manufacturing, machining, fabrication, and assembly uses
- ▶ **SIZE:** 12,000 sq ft; 80' wide x 150' long x 24' tall
- ▶ (1) 12'x14' overhead door, (1) loading dock, aluminum windows and entry doors, daylighting in production area
- ▶ All fees & state building plan approval for commercial uses
- ▶ Butler Shadowall wall panels and MR-24® standing seam roof
- ▶ Structure will accommodate a 10-ton overhead bridge crane and is designed for easy expansion
- ▶ 6" thick reinforced concrete slab, 8' tall interior metal liner panel, clear span building frames
- ▶ 600 amp, three phase electrical service, LED lighting, and exterior illumination
- ▶ (4) private offices, conference room, break room, and bathrooms
- ▶ Approximate 6 month construction timeline from permit to approval



Proud Butler Career Builder

A.C.E. Building Service has been a Butler Builder since 1973, and we have been a designated Career Builder since 1975.

Only Butler Builders who have demonstrated total competence in design and construction are eligible for this highest level of affiliation with the Buildings Division. The Career Builder designation is a significant achievement and means that our team meets the highest standards of performance in these seven key areas:

- ▶ Marketing Competence
- ▶ Construction Capability
- ▶ Professional Design Services
- ▶ Sound Business Management
- ▶ Adequate Financial Resources
- ▶ High Local Reputation
- ▶ Career Dedication



As a Career Builder, A.C.E. Building Service, Inc., shares an added responsibility with Butler Manufacturing Company to jointly offer the best in construction products and services to our mutual customers.



Interested In Learning How A Butler Building Can Work For You?

We would be happy to listen to your ideas and show you how the Butler Building System can work for your project. **Let's get started.**

Chris Herzog, LEED-AP
President
cherzog@acebuildingservice.com
Phone: 920.901.0667
acebuildingservice.com



3510 S. 26th Street
Manitowoc, Wisconsin 54221-1626
Phone: 920.682.6105